

Rheem Guide to Gas Storage Hot Water



INSTALL A RHEEM®





A name you can trust

Whatever your situation, Rheem has a water heater that's ideal for you. Designed and manufactured in accordance with Australian Standards, Rheem builds quality products trusted for reliable performance in all Australian conditions.

Rheem's unmatched range of water heaters includes Solar, Heat Pump, Instantaneous, 5 Star Gas Storage and conventional gas and electric storage products. Whether you need a compact, high efficiency hot water solution or are operating on a budget, there'll be something in the Rheem range to suit.

Rheem products are stocked in major plumbing merchants, appliance retailers and energy supplier showrooms across Australia, which makes getting a Rheem water heater easy, wherever you are located. Every Rheem product is backed by a comprehensive warranty and over 60 years experience in manufacturing water heaters in Australia.

Things to consider when selecting a Gas Water Heater

1) Purchase / Installation Costs

Gas storage systems are a relatively inexpensive solution to your hot water needs if you have an existing gas supply to your home. If you are replacing an existing gas storage water heater, a "like for like" replacement also tends to reduce installation costs.

2) Running Costs

These will be based on your household usage. Natural gas is around the same price as 'extended hours' off-peak electricity in most States, however natural gas isn't available everywhere. Higher efficiency gas storage water heaters will cost less to run, so remember to check the energy star rating of the heater you are considering. For example, a 5 star energy efficient gas water heater will cost less to run than a 3 star water heater for the same water delivery.

3) Capacity

Gas storage water heaters are rated by their storage capacity and their "recovery rate", or the rate measured in litres that can be 're-heated' in one hour. For example a Rheem Stellar 360 has a storage capacity of 160 litres and a recovery rate of 200 litres per hour.

4) The Environment

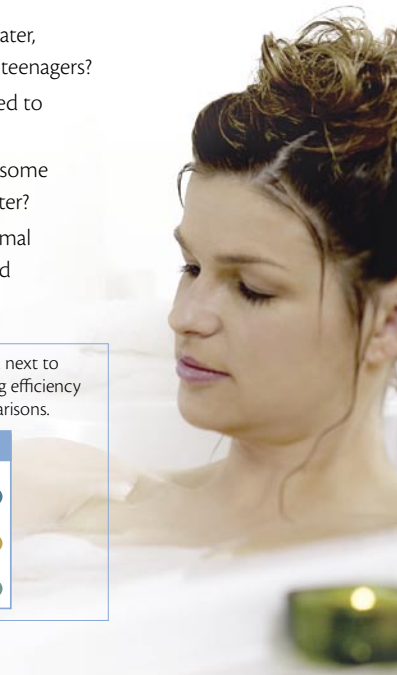
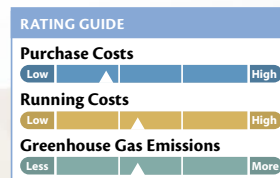
Natural Gas fuelled water heaters produce relatively low levels of greenhouse gas emissions. In some states consumers switching from electric to gas water heating are eligible for rebates or tradeable greenhouse gas abatement certificates which can be worth hundreds of dollars. Check with your installer to see if you are eligible. If you are interested in even more environmentally sustainable water heater options please refer to the Rheem Solar brochure in this series.

Choosing the right size or capacity

When choosing the right sized water heater for your household, you will need to consider how you use the hot water, for example:

- How many bathrooms are in your home or how many people use hot water at the same time?
- How many adults and children live at home?
- As they can use a lot of hot water, how many of the children are teenagers?
- Is there a dishwasher connected to the hot water supply?
- Do you wash your clothes all, some or none of the time in hot water?
- Do you have a larger than normal bathtub or spa-tub that is filled using the hot water supply?

This easy reference guide is provided next to each product showing costs, running efficiency and greenhouse gas emission comparisons.



Stellar Gas

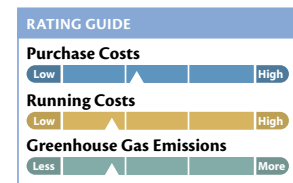
Rheem Stellar high-efficiency gas storage water heaters are a revolution in water heating. With 5 Star energy efficiency and 200 litre per hour recovery capability in a choice of either 330 or 360 litre first hour capacities, Rheem Stellar provides more hot water than most families will ever need.

Rheem Stellar also offers the peace of mind that comes with a 10 year warranty covering both cylinder and SuperFlue¹, thanks to Rheem's heavy-duty enamel, for long-lasting protection.

Model (Litres)	330	360
People Per Household: Moderate Climate	2-5	3-6
People Per Household: Cool Climate	2-5	3-6
Warranty	10 years¹	
Installation	Outdoor	
Fuel Source	Gas	
Energy Rating	★★★★★	

Disclaimers **1.** 10 years warranty on the cylinder and SuperFlue, 5 years labour warranty on the cylinder and Superflue, 1 year parts and labour on all other components. See Owner's Guide for conditions.

- 5 Star Gas Energy Efficiency
- Reheats 200 litres per hour
- Mains Pressure at multiple taps
- 10 year warranty¹
- Available to suit Natural Gas and Propane (LPG)
- Available in 330 litre and 360 litre first-hour capacities
- Designed to complement modern homes
- Durable COLORBOND® finish



Optima Gas

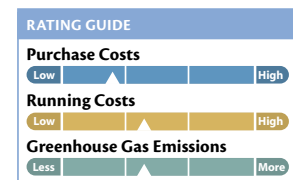
Rheem Optima gas storage water heaters offer the peace of mind that comes with a 10 year warranty in a choice of 135 litre or 170 litre capacities.

Optima utilises Rheem's heavy-duty enamel for long-lasting protection and Rheem's automated manufacturing and precision welding technology for reliable operation.

Model (Litres)	135	170
People Per Household: Moderate Climate	2-4	3-5
People Per Household: Cool Climate	2-3	3-4
Warranty	10 years¹	
Installation	Outdoor	
Fuel Source	Gas	
Energy Rating	3 Stars²	

Disclaimers **1.** 10 year cylinder warranty, 5 year labour warranty on the cylinder, 1 year parts and labour warranty. See Owners Guide for conditions. **2.** 170 litre model has an energy rating of 2.9 Stars

- Mains Pressure at multiple taps
- 10 year warranty¹
- Rapid reheating in less than an hour
- Available to suit Natural Gas and Propane (LPG)
- Proven Rheem reliability
- Available in 135 litre and 170 litre capacities
- Durable COLORBOND® finish



Rheemglas Gas

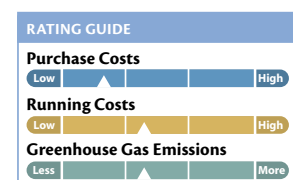
Rheemglas is Rheem's economical gas storage water heater range available in either 135 litre or 170 litre capacities. Rheemglas is also available as an indoor model in both 135 litre or 170 litre capacities.

Featuring Rheem's unique Rheemglas enamel formulation, for long-lasting protection and Rheem's automated manufacturing and precision welding technology, Rheemglas provides years of trouble-free hot water.

Model (Litres)	90	135	170
People Per Household: Moderate Climate	1-3	2-4	3-5
People Per Household: Cool Climate	1-2	2-3	3-4
Warranty	5 years¹		
Installation	Outdoor	Outdoor / Indoor	
Fuel Source	Gas		
Energy Rating	3 Stars²		

Disclaimers **1.** 5 year cylinder warranty, 3 year labour warranty on the cylinder, 1 year parts and labour warranty. See Owners Guide for conditions. **2.** 170L model energy rating is 2.9 stars

- Mains Pressure at multiple taps
- 5 year warranty¹
- Choice of 3 sizes
- Available to suit Natural Gas and Propane (LPG)
- Proven Rheem reliability
- Indoor models available
- Durable COLORBOND® finish



Quick Reference

GAS								
	Warranty	Outdoor					Indoor	
RHEEM STELLAR	10 Years			850330		850360		
RHEEM OPTIMA	10 Years		811135		811170			
RHEEMGLAS	5 Years	311090	311135		311170		300135	300170
Storage Capacity (litres)		85	130	130	160	160	135	170
Recovery @ 45°C per hour		125	150	200	175	200	125	125
First Hour Capacity		210	280	330	335	360	260	295
Height (mm)		1198	1598	1600	1898	1900	1615	1915
Width (mm)		422	422	485	422	485	425	425
Depth (mm)		502	502	558	502	558	500	500
Approx Weight Empty (kg)		52	68	70	79	80	54	63
Energy Rating (Stars)		3.4 Stars	3.2 Stars	5.2 Stars	2.9 Stars	5.0 Stars	3.4 Stars	3.2 Stars
People Per Household								
Moderate Climate		1-3	2-4	2-5	3-5	3-6	2-4	3-5
Cool Climate		1-2	2-3	2-5	3-4	3-6	2-3	3-4

Glossary of Terms

Recovery Rate - Describes the water volume that a water heater can 'reheat' within one hour. For example, when a water heater runs completely cold, the recovery rate describes how much of the water heaters' capacity it can heat (by 45°C over the cold water temperature) within an hour. The recovery rate will vary widely as some water heaters such as electric off-peak models may not have any daytime recovery, while some gas models can recover their entire volume in less than an hour.

First Hour Capacity - This is a measure of water heater capacity that combines the stored hot water volume with the hourly recovery rate. For example, if a water heater stores 160 litres of hot water and has a recovery rate of 200 litres per hour, its first hour capacity is 360 litres.

Mains Pressure Water Heater - A water heater connected directly to the cold water mains so that hot water is delivered at a similar pressure to the cold water.

LPG - The common term used to describe Liquefied Petroleum Gases, which in Australia are sold as either

propane for domestic use or Autogas for use in vehicles. Note that Autogas is not suitable for use in domestic appliances.

Propane - The more correct name used to describe liquefied petroleum gas supplied for domestic use in Australia. It is sometimes generically referred to as LPG. Although rare, there are some localities in Australia that are supplied with butane instead of propane so if unsure, contact your gas supplier before purchasing 'LPG' appliances.

RHEEM AUSTRALIA • rheem.com.au • Sales 132 552 • Service 131 031

©Registered trademark of Rheem Australia Pty Ltd. TM Trademark of Rheem Australia Pty Ltd *Colorbond is a registered trademark of BlueScope Steel Pty Ltd. Date of Printing April 2008. Rheem Australia Pty Ltd, 1 Alan St, Rydalmere NSW 2116. Materials and specifications are subject to change without notice.

